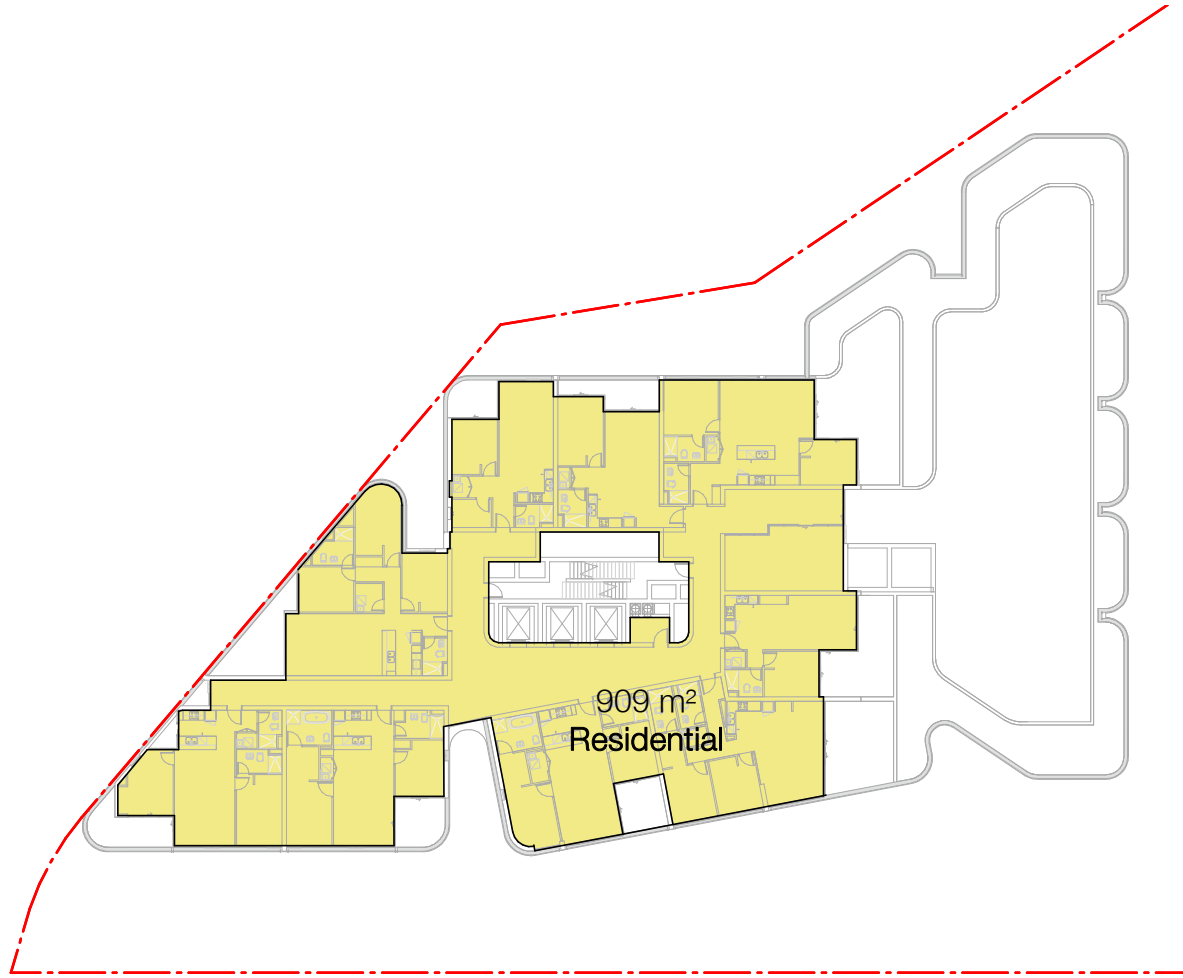
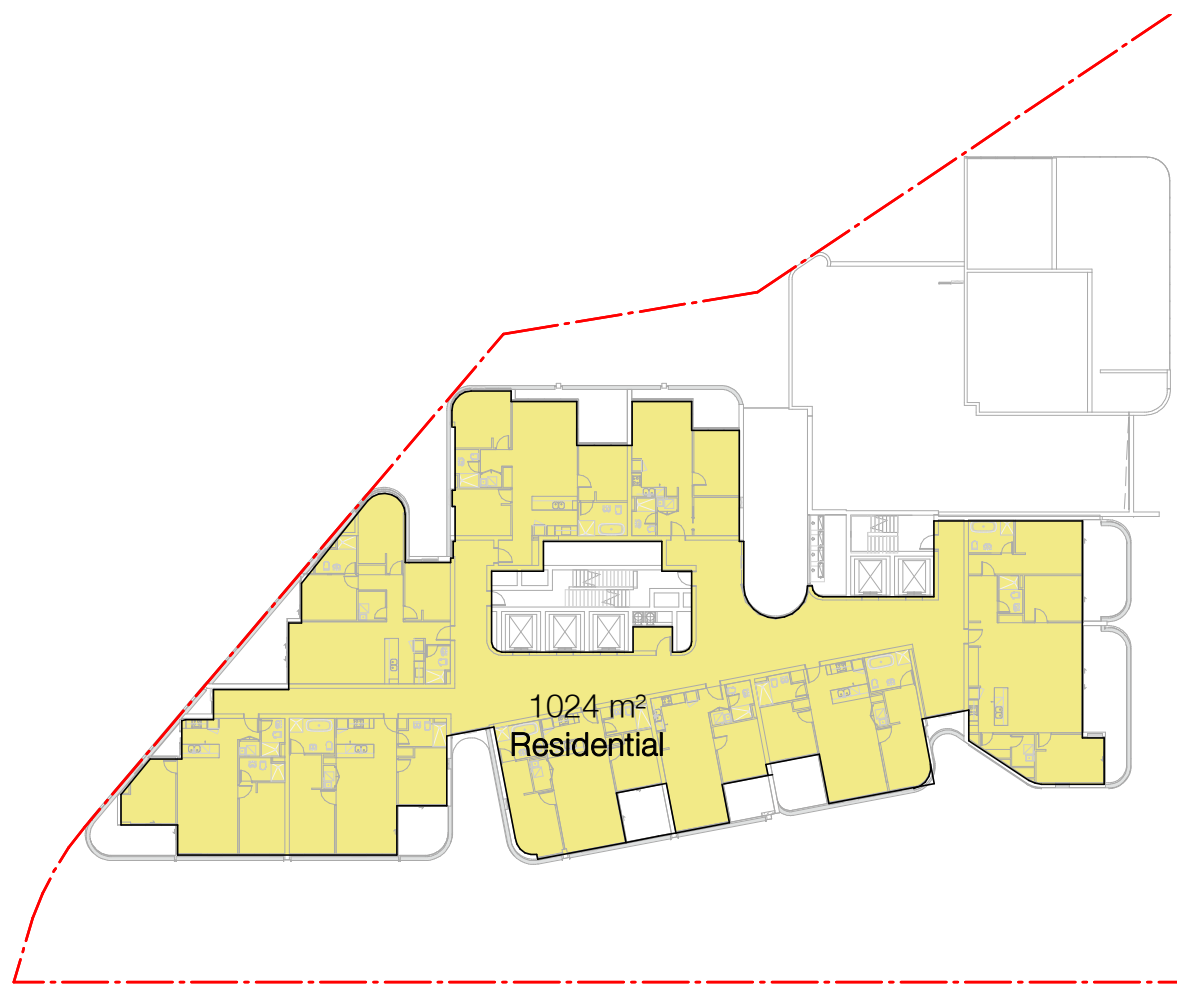


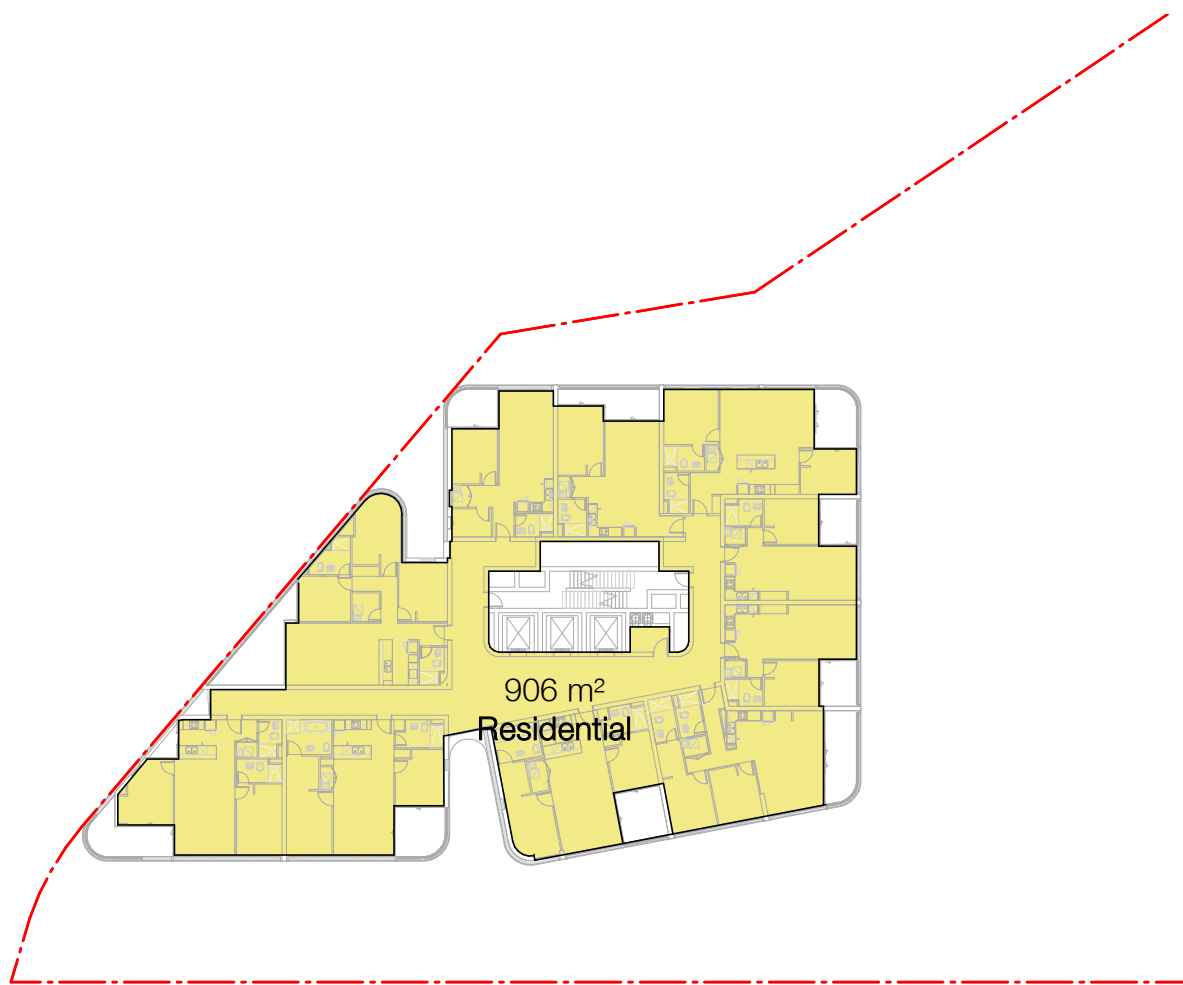
GROUND LEVEL



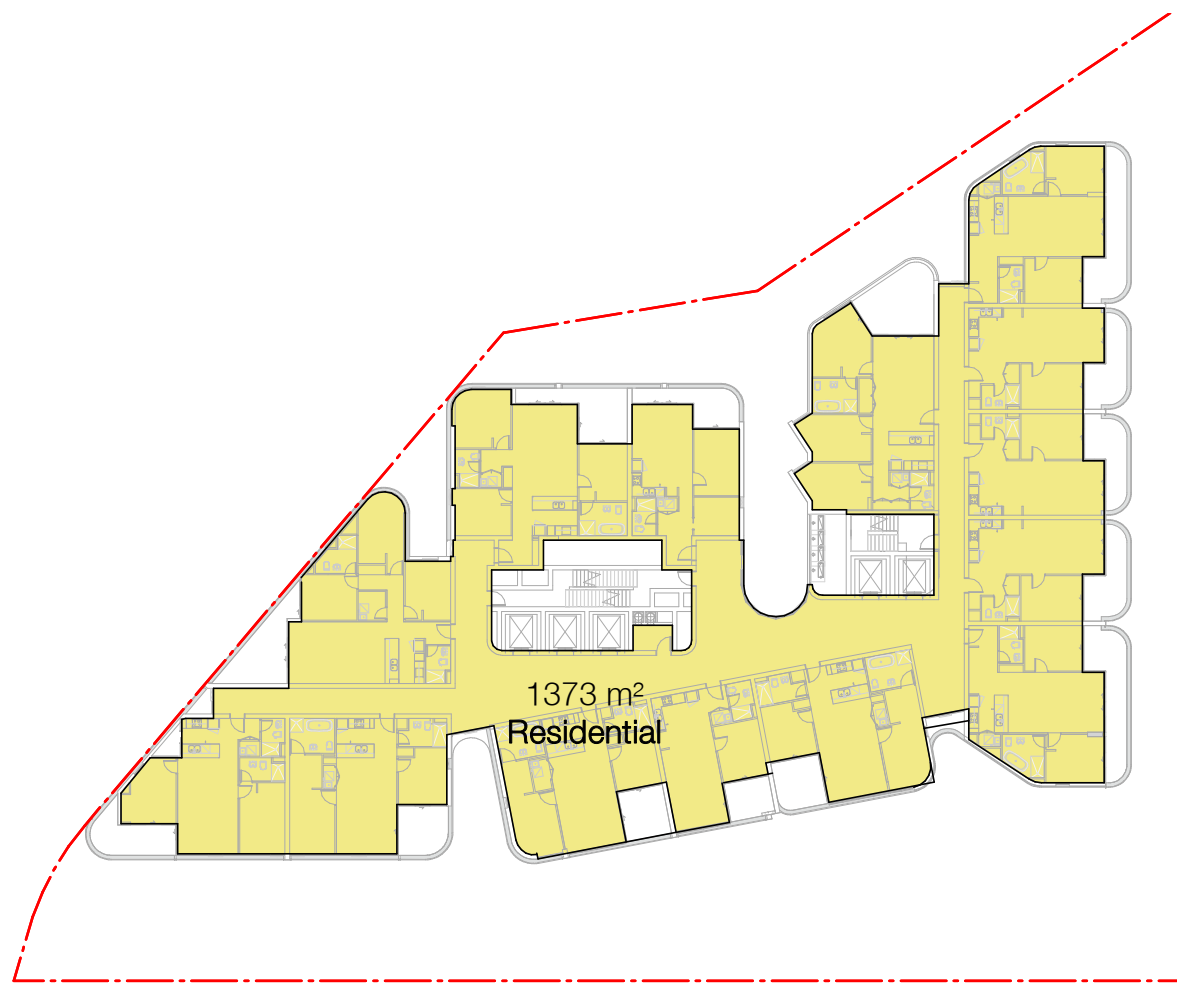
LEVEL 10



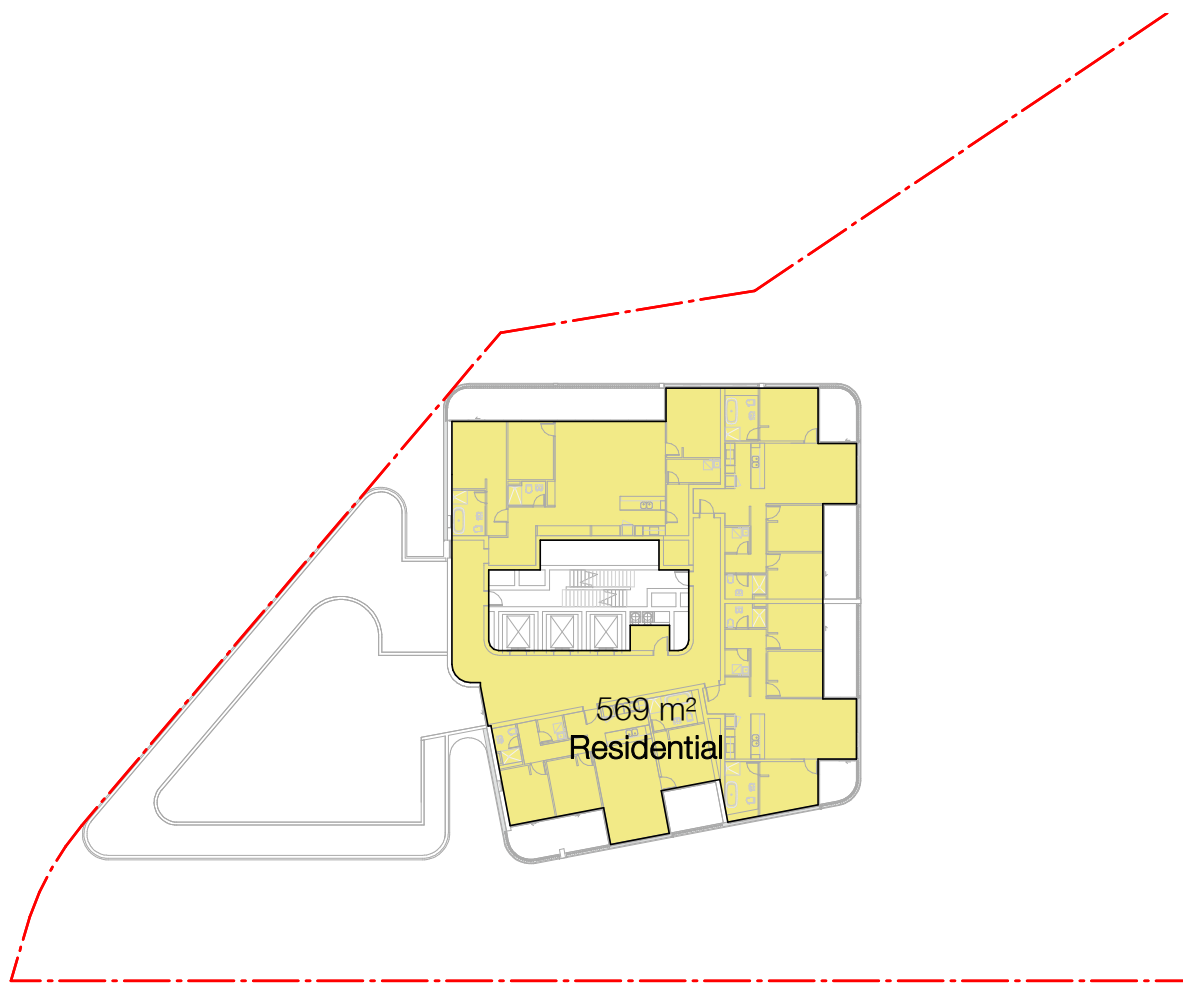
LEVEL 01



LEVEL 11 - LEVEL 16



LEVEL 02 - LEVEL 09



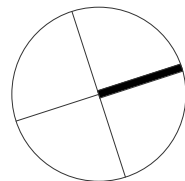
LEVEL 17

SJB Architects

RL	LEVEL	Parking	1 Bed	1 Bed + ST	2 Bed	3 Bed	total	Solar	Cross	South	NSA	NSA/GFA	GFA
-0.5	Parking 4	61	-	-	-	-	-	-	-	-	-	-	-
2.5	Parking 3	59	-	-	-	-	-	-	-	-	-	-	-
5.5	Parking 2	59	-	-	-	-	-	-	-	-	-	-	-
8.5	Parking 1	42	-	-	-	-	-	-	-	-	-	-	-
12.4	Ground	-	1	-	2	3	6	4	1	1	810	81%	1003
	Retail	-	-	-	-	-	-	-	-	-	-	-	105
16.1	Level 01	-	2	1	4	3	10	6	7	1	770	75%	1024
19.2	Level 02	-	4	1	6	3	14	10	10	1	1070	78%	1373
22.3	Level 03	-	4	1	6	3	14	10	10	1	1070	78%	1373
25.4	Level 04	-	4	1	6	3	14	10	10	1	1070	78%	1373
28.5	Level 05	-	4	1	6	3	14	10	10	1	1070	78%	1373
31.6	Level 06	-	4	1	6	3	14	10	10	1	1070	78%	1373
34.7	Level 07	-	4	1	6	3	14	10	10	1	1070	78%	1373
37.8	Level 08	-	4	1	6	3	14	10	10	1	1070	78%	1373
40.9	Level 09	-	4	1	6	3	14	10	-	1	1070	78%	1373
44.0	Level 10	-	2	1	5	1	9	6	-	1	640	70%	909
47.1	Level 11	-	3	1	5	1	10	7	-	1	720	79%	906
50.2	Level 12	-	3	1	5	1	10	7	-	1	720	79%	906
53.3	Level 13	-	3	1	5	1	10	7	-	1	720	79%	906
56.4	Level 14	-	3	1	5	1	10	7	-	1	720	79%	906
59.5	Level 15	-	3	1	5	1	10	7	-	1	720	79%	906
62.6	Level 16	-	3	1	5	1	10	7	-	1	720	79%	906
65.7	Level 17	-	-	-	-	-	-	-	-	-	-	-	0
69.0	Roof	-	-	-	-	-	-	-	-	-	-	-	0
TOTALS		221	55	16	89	41	201	142	78	17	15565	78%	19925
MIX			27.4%	8.0%	44.3%	20.4%		71%	68%	8%		avg.	
1,2,3's			35.3%		44.3%	20.4%							
TOTAL							201						

TOTAL GFA: 19,925m²

In accepting and utilising this document the recipient agrees that SJB Architecture (NSW) Pty. Ltd. ACN 081 094 724 T/A SJB Architects, retain all common law, statutory law and other rights including copyright and intellectual property rights. The recipient agrees not to use this document for any purpose other than its intended use, to waive all claims against SJB Architects resulting from unauthorised changes or to reuse the document on other projects without prior written consent from SJB Architects. Under no circumstances shall transfer of this document be deemed a sale. SJB Architects makes no warranties of fitness for any purpose. The Builder/Contractor shall verify job dimensions prior to any work commencing. Use figured dimensions only. Do not scale drawings.
Nominated Architects: Adam Haddow-7188 | John Pradel-7004



0 5 10 25m
1:500 @A1

Rev	Date	Revision	By	Chk.
7	11.09.2020	DRAFT DA ISSUE	BR	JT
8	16.09.2020	DRAFT DA ISSUE	BR	JT
9	22.09.2020	DA ISSUE	BR	JT
10	17.08.2021	FOR INFORMATION	JG	NH
11	20.09.2021	LEC INFORMATION		
12	23.09.2021	LEC UPDATES		

Client

LEICE PTY LTD

Project

2-10 LEICESTER AVE
STRATHFIELD NSW 2135
Drawing Name
GFA ANALYSIS

Date

23.09.2021

Scale

1 : 500

Sheet Size

@ A1

Drawn

BR

Chk.

JT

Job No.

6242

Drawing No.

DA-3301

Revision

/ 12

SJB Architects
L2, 490 Crown St
Surry Hills NSW
2010 Australia
T 611 2 9380 9911
www.sjb.com.au

